

Paper Reference(s) 8CH0/02
Pearson Edexcel Level 3 GCE

Chemistry
Advanced Subsidiary
PAPER 2: Core Organic and Physical Chemistry

Diagram Booklet

In the boxes below, write your name, centre number and candidate number.

Surname					
Other names					
Centre Number					
Candidate Number					

INSTRUCTIONS

There may be spare copies of some diagrams in case you need them.

THIS DIAGRAM BOOKLET MUST BE RETURNED WITH THE QUESTION PAPER AT THE END OF THE EXAMINATION.

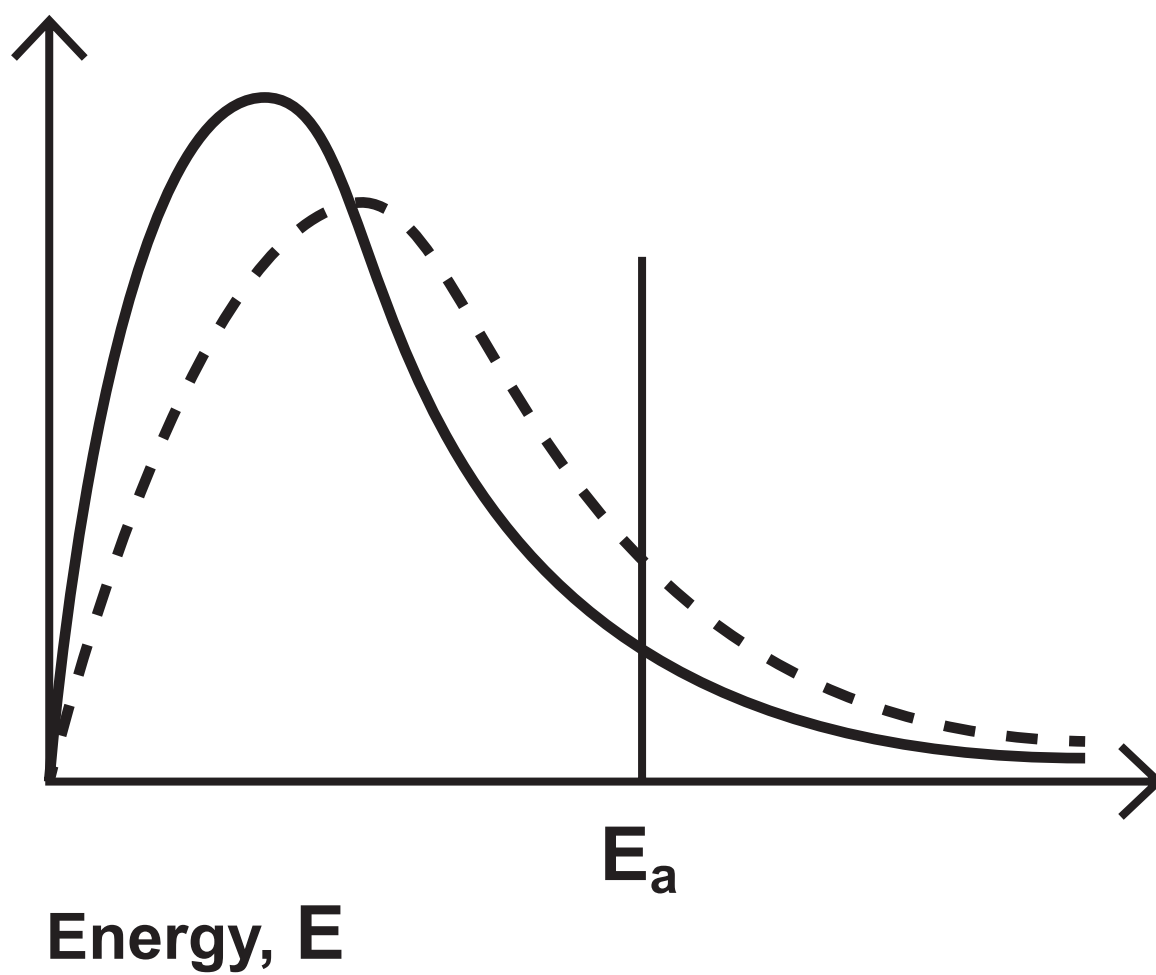
Contents

Page

4	Question 1(a)
5	Question 1(b)(i)
6	Question 1(b)(i) (Spare copy)
7	Question 2
8	Question 3(a)(i)
9	Question 4(a)(i)
10	Question 4(a)(i) (Spare copy)
11	Question 5(b)(iv)
12	Question 5(b)(vi)
13	Question 6(d)(ii)
14	Question 7(a)(ii)
15	Question 7(a)(ii) (Spare copy)
16	Question 7(b)(i)
17	Question 7(b)(i) (Spare copy)

Question 1(a)

Key

— T_1 - - - T_2 $T_1 < T_2$ Number of molecules
with energy, E 

Question 1(b)(i)

Energy



Reaction progress



Question 1(b)(i)

Energy



Reaction progress



Question 2

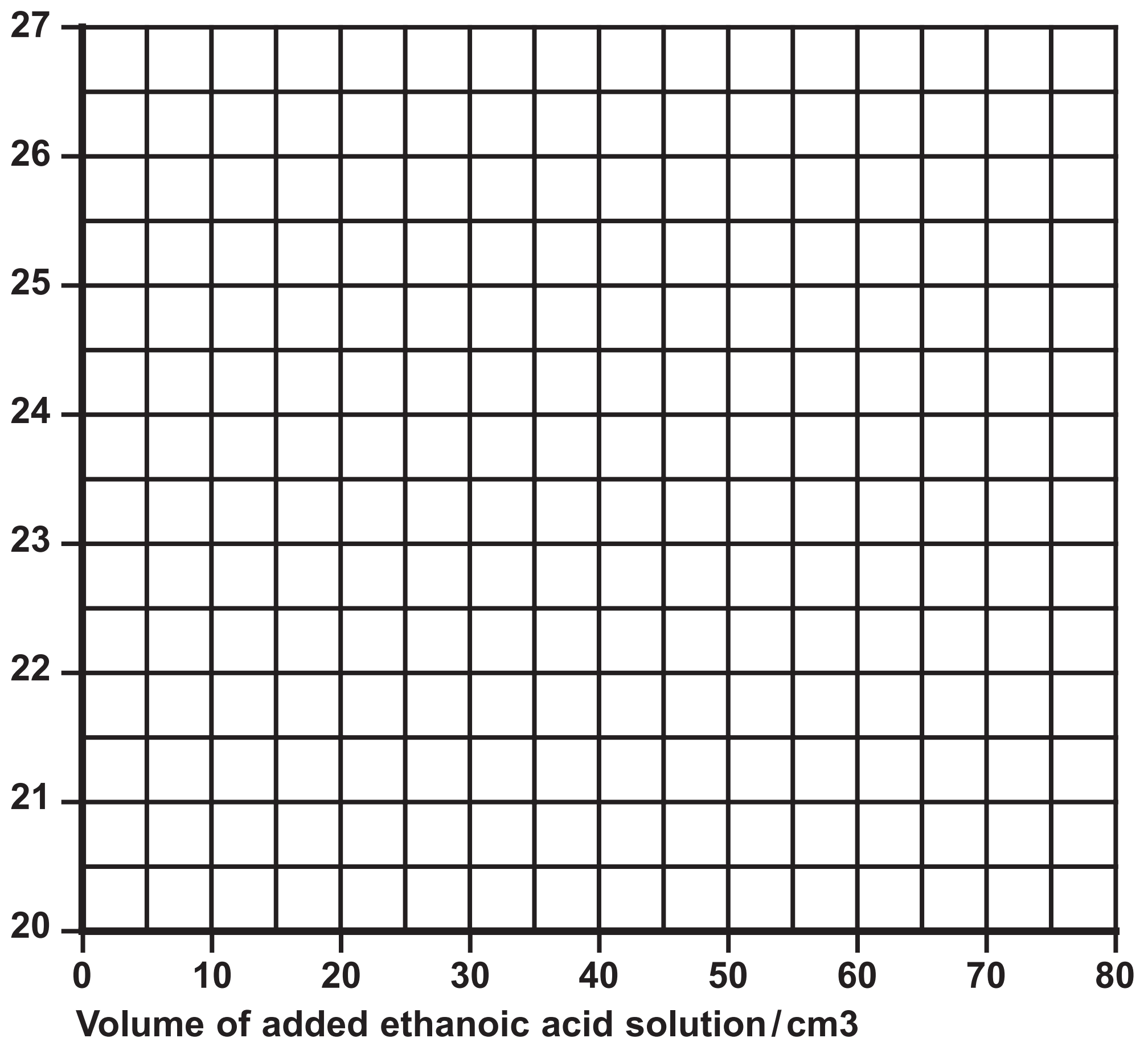


Question 3(a)(i)

Bond	Mean bond enthalpy / kJ mol^{-1}
C—C	347
C—H	413
O=O	498
C=O	805
O—H	464

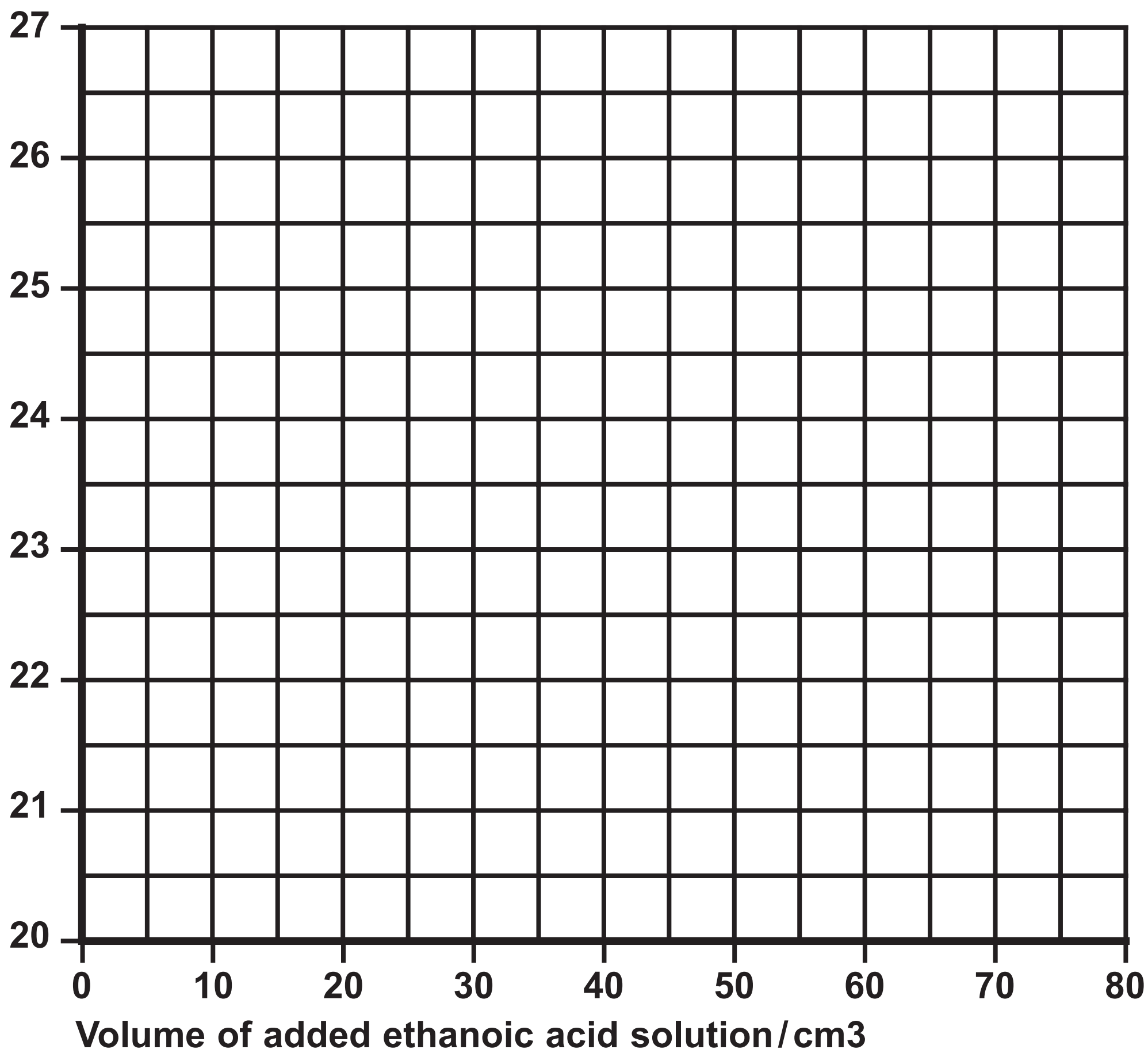
Question 4(a)(i)

Temperature / °C



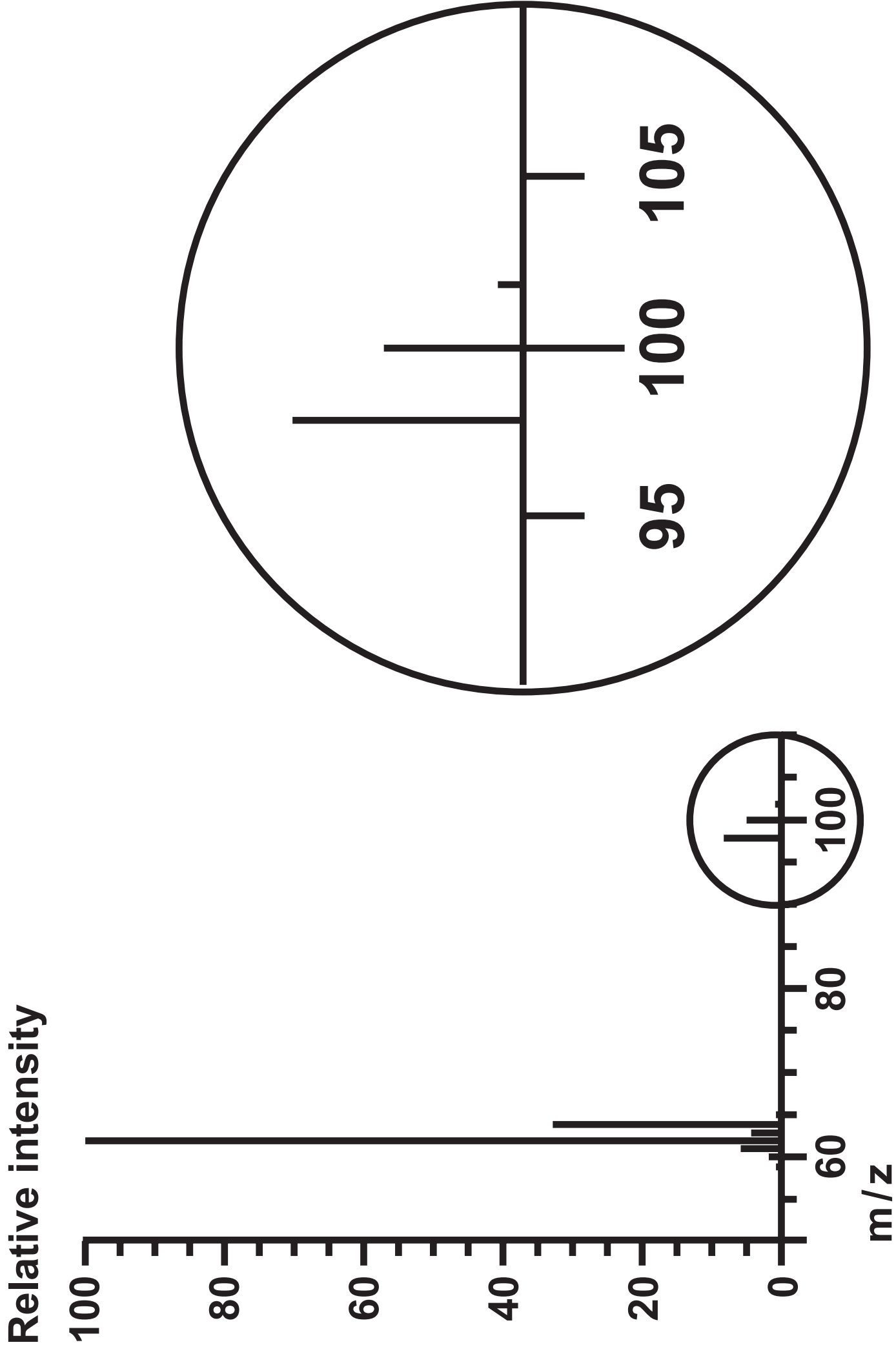
Question 4(a)(i)

Temperature / °C



Question 5(b)(iv)

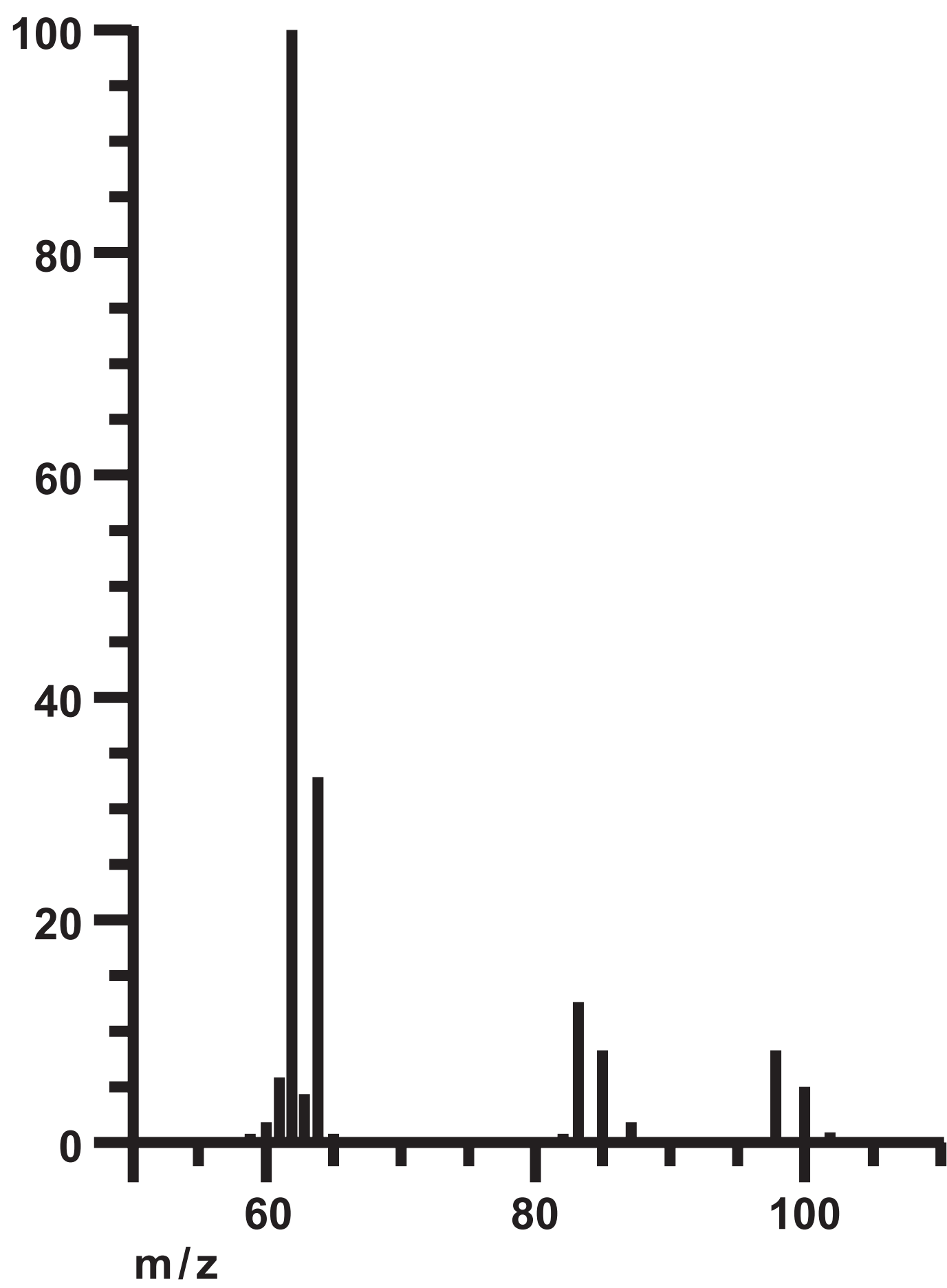
SPECTRUM A



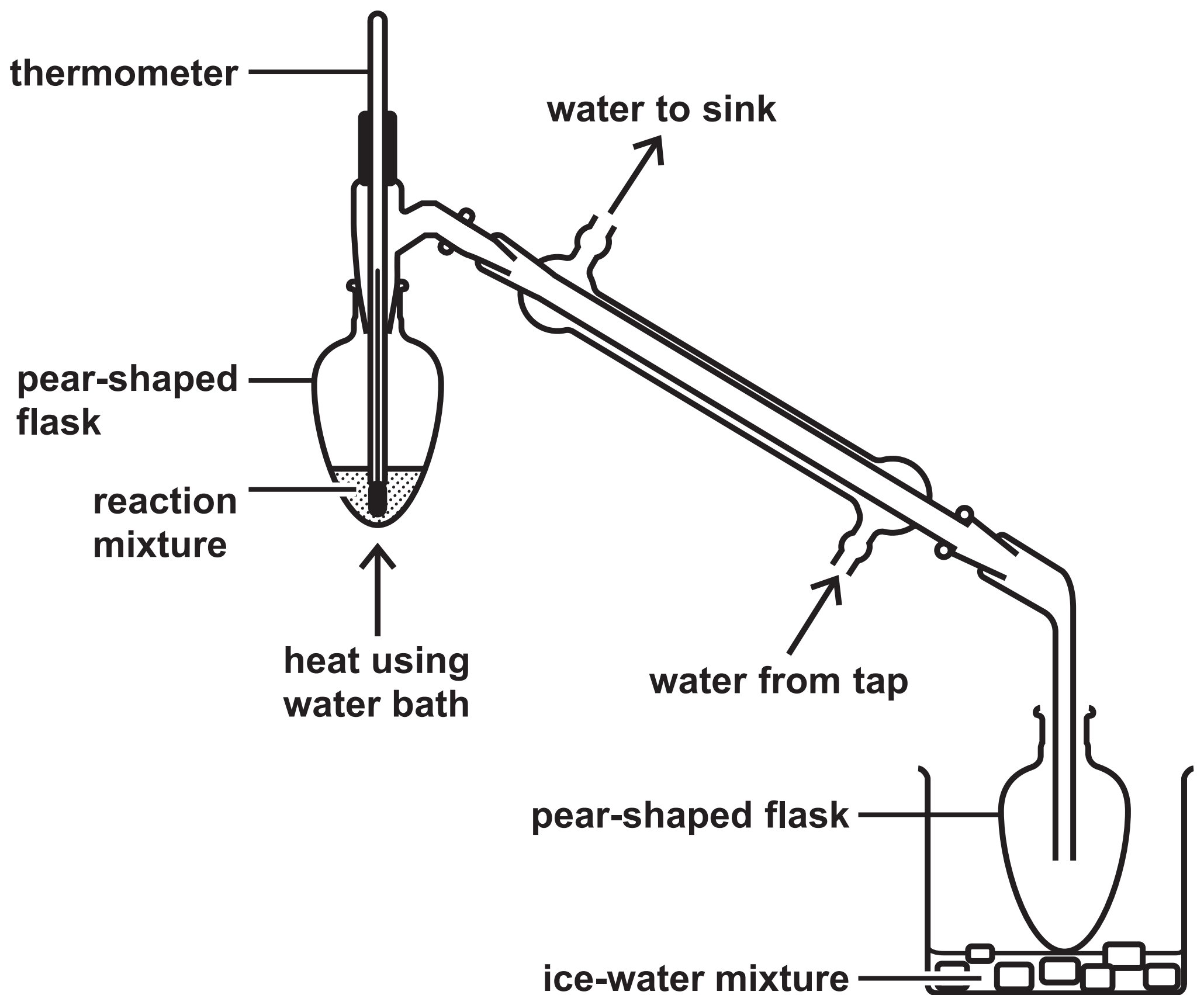
Question 5(b)(vi)

SPECTRUM B

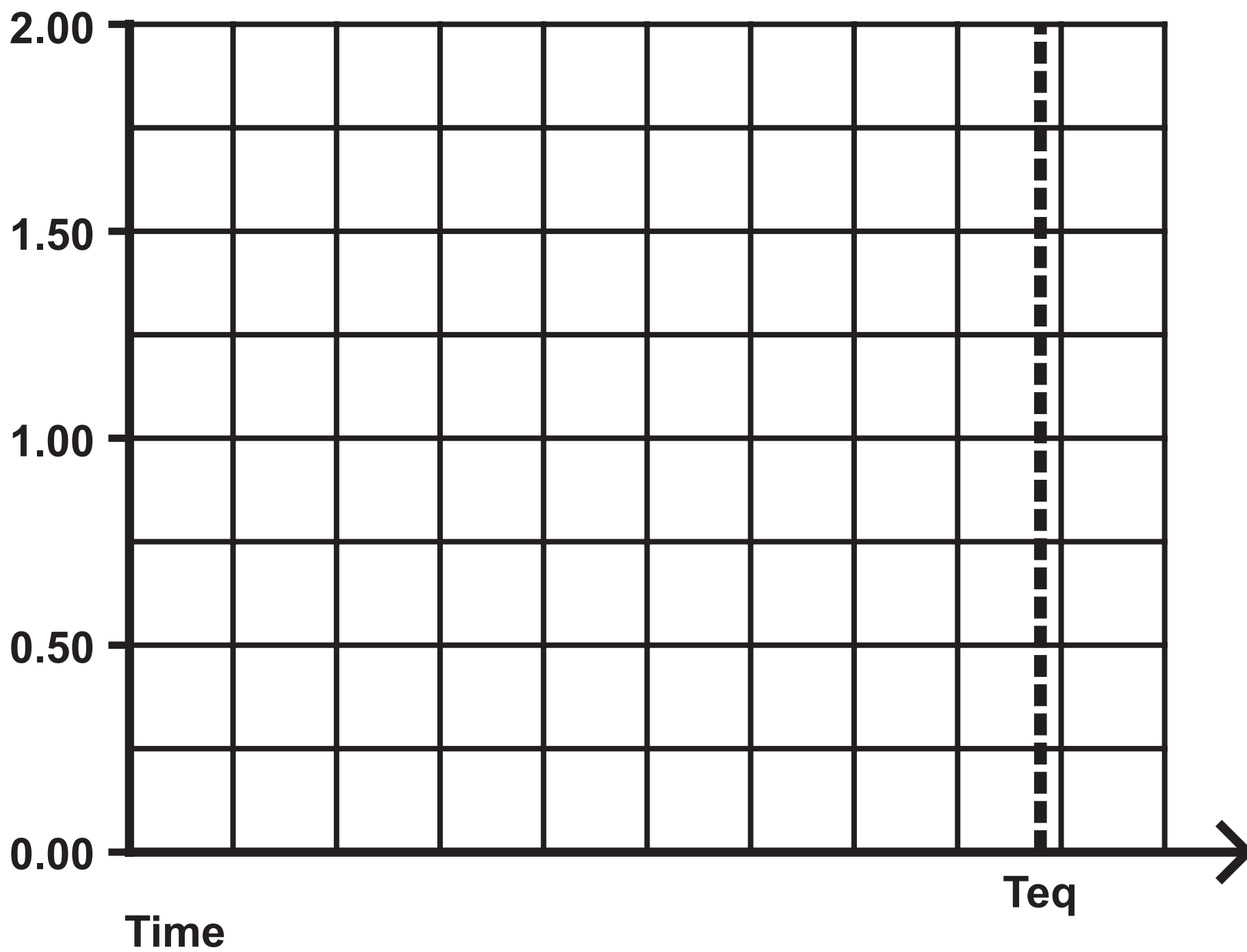
Relative intensity



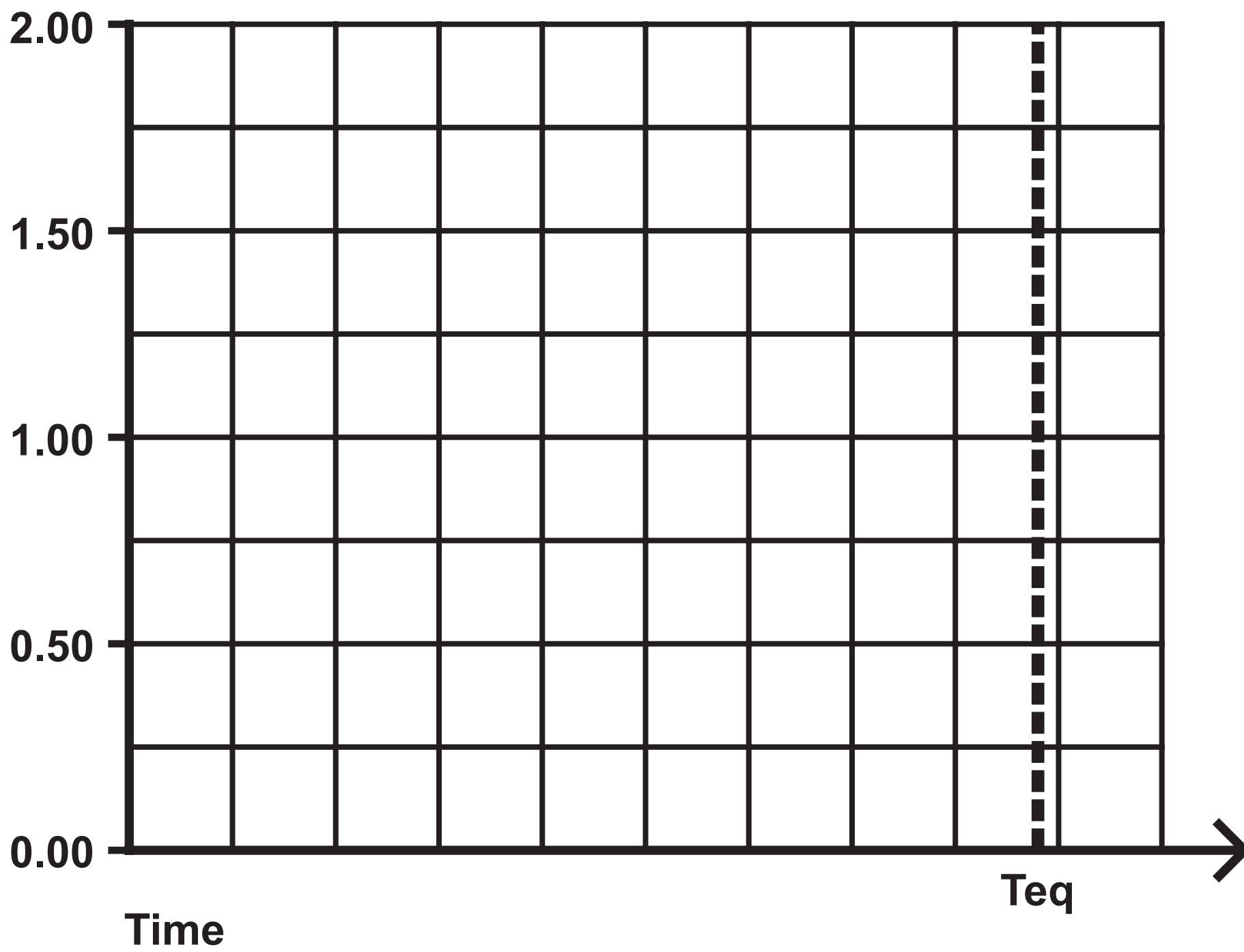
Question 6(d)(ii)



Question 7(a)(ii)

Concentration / mol dm⁻³

Question 7(a)(ii)

Concentration / mol dm⁻³

Question 7(b)(i)



Question 7(b)(i)

